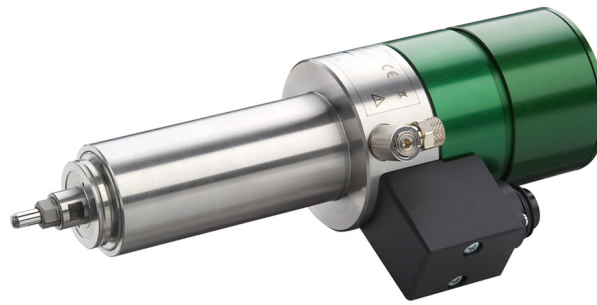


Type 4041 "HY-ESD"

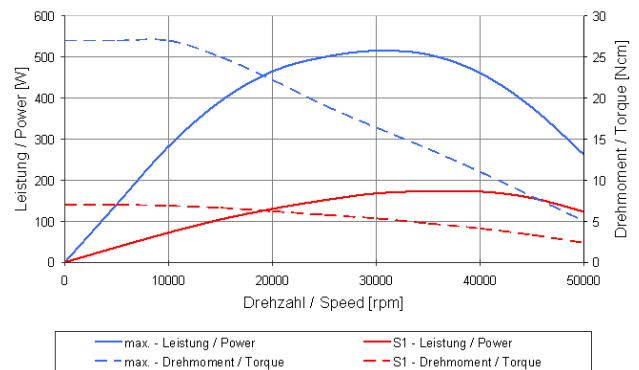
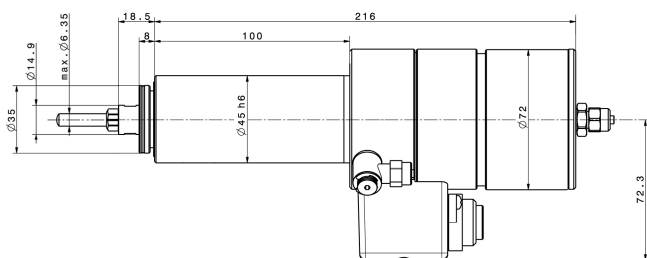


| Bestell-Nr. 2001 2520 | |
|---|---|
| Anwendungen | Leiterplatten fräsen |
| Spanndurchmesser | 45 mm |
| Motorart | 3 Phasen-Asynchronmotor |
| Drehzahlbereich | 5.000 - 50.000 min ⁻¹ |
| Spannung | 48 V |
| Strom | max. 13 A |
| Drehmoment | max. 27 Ncm |
| Frequenz | 83 - 833 Hz |
| Leistung | max. 500 W |
| Gewicht | 3,5 kg |
| Lagerung | 3 x Hybrid, lebensdauergeschmiert |
| Schutzart | IP 54 |
| Motorschutz | PTC - 100 °C |
| Gebrauchslage | |
| Belastungsrichtung | axial + radial |
| Rundlauf (Kegel) | ≤ 1,5 µm |
| Spannzangenbereich | Ø 1,0 - 6,35 mm (incl. 1/8 + 1/4") |
| Werkzeugwechsel | pneumatisch 5 - 6 bar |
| Kühlsystem | Kühlung durch Einspannvorrichtung |
| Geschützt gegen Schmutz und Kühlschmiermittel | Sperrluft 0,5 - 0,8 bar (Schlauch Ø innen/außen 4/6 mm) |
| Gehäusematerial | Edelstahl |
| Umrichterempfehlung | e@syDrive® 4426, TV 4506 |
| Besonderheiten | Ableitung elektrostatischer Aufladung |

Änderungen vorbehalten

| Part No. 2001 2520 | |
|--|---|
| Applications | PCB routing |
| Clamping diameter | 45 mm |
| Motor system | 3 Phase asynchronous motor |
| Speed range | 5,000 - 50,000 rpm |
| Voltage | 48 V |
| Current | max. 13 A |
| Torque | max. 27 Ncm |
| Frequency | 83 - 833 Hz |
| Output power | max. 500 W |
| Weight | 3.5 kg |
| Bearing system | 3 x Hybrid, lifetime lubrication |
| Protection category | IP 54 |
| Motor protection | PTC - 100°C |
| Working position | |
| Load direction | axial + radial |
| Run-out (taper) | ≤ 1.5 µm |
| Chuck clamping range | Ø 1.0 - 6.35 mm (incl. 1/8 + 1/4") |
| Tool change | pneumatically 5 - 6 bar |
| Cooling system | Cooling via clamping bracket |
| Protected against dirt and cooling lubricant | Sealing air 0.5 - 0.8 bar (hose Ø inner/outer 4/6 mm) |
| Housing material | Stainless steel |
| Inverter recommendation | e@syDrive® 4426, TV 4506 |
| Highlights | Electrostatic discharge |

Subject to change without notice



INDUSTRIAL DRIVES

SycoTec GmbH & Co. KG
 Wangener Strasse 78
 88299 Leutkirch
 Germany

Phone +49 7561 86-0
 Fax +49 7561 86-371
 info@sycotec.eu
 www.sycotec.eu

